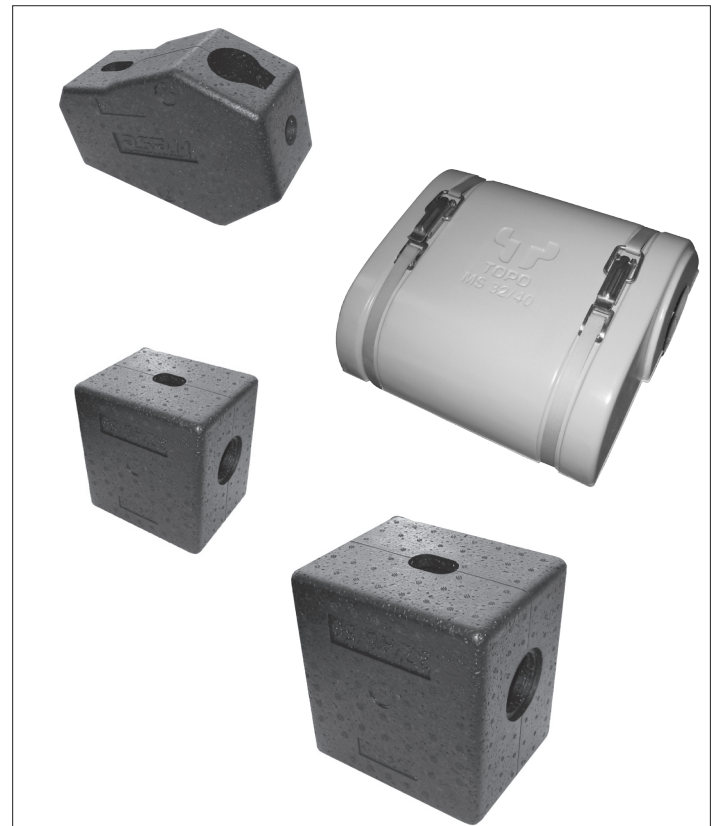


## Insulation jackets for Frese S and PV

### Application

The insulation jackets have been specifically designed for the insulation of Frese S, and PV valves.

Insulation of valves may reduce the temperature in control room, boiler room, and pipe tunnels. Resulting in a more agreeable working temperature, reduced thermal loss and, consequently, better heat economy year after year.



### Benefits

- Easy installation and removal

### Features

- Fire resistant in accordance with the fire rating B2, DIN4102
- Resistant to most chemicals. Will not be attacked by dry rot or mold
- Does not absorb moisture and, unlike "wet" mineral wool does not become conductive to heat


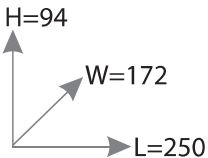

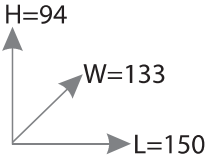

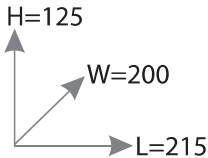
## Insulation jackets for Frese S and PV

### Technical data

<b>Material:</b>	<b>EPP</b> (Expanded Polypropylene)
<b>Water absorption:</b>	< 2,5 vol% at 20°C
<b>Temperature range:</b>	up to 120°C
<b>Insulating property:</b>	Lamda = 0.039 W/mk (20g/l)

*(must only be used in heating applications)*

### Product programme

		All measurements in mm.
<p><b>Frese no. 38-0845</b></p> <p>For Frese S and PV valve DN15/20/25</p>		
<p><b>Frese no. 38-0846</b></p> <p>For combination ball valve in supply side of Frese S and PV DN15/20/25</p>		
<p><b>Frese no. 38-0854</b></p> <p>For Frese S and PV valve DN32/40/50</p>		
<p><b>Frese no. 38-0848</b></p> <p>For combination valve in supply side of Frese S and PV DN32/40/50</p>	