

Insulation Covers

Frese Valves, DN10-DN50

Description

The insulation covers have been specifically designed for the insulation of OPTIMA Compact, PV Compact, SIGMA Compact, ALPHA, Frese VODRV and COMBIFLOW.

The use of insulation on valves will result in reduced thermal loss and improved heat economy.

Application

For heating applications only - not suitable for cooling circuits due to condensing water



Benefits

- Easy installation and removal - no retaining straps required
- Robust material allows reuse
- The valve can be adjusted with the insulation mounted
- Reduces thermal heat loss
- Easy access to PT plugs without the need to remove the insulation

Features

- Fire resistant in accordance with the DIN 4102: B2 fire rating
- Resistant to most chemicals - will not be attacked by dry rot or mold
- Does not absorb moisture
- Flow indication arrows and valve size clearly visible

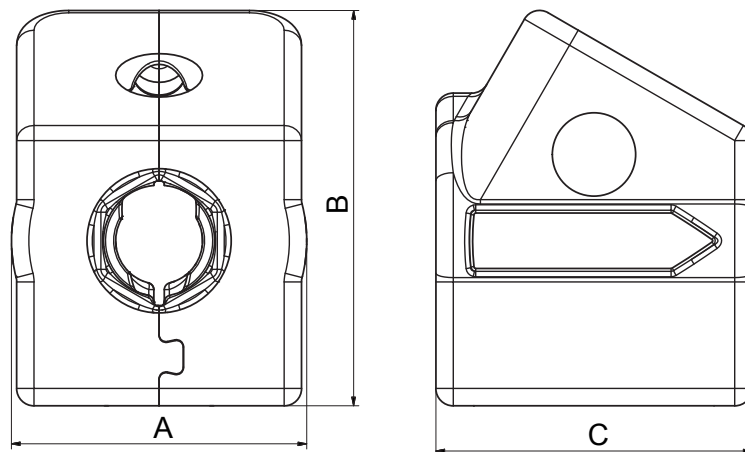
Insulation Covers

Frese Valves, DN10-DN50

Technical data · Insulation Covers for OPTIMA Compact, PV Compact and SIGMA Compact

- Material:** EPP (Expanded Polypropylene)
- Water absorption:** < 2.5 vol % at 20 °C
- Temperature range:** Up to 120 °C
- Insulating property:** Lambda = 0.039 W/mk
- Density:** 50 g/l
- Fire resistant:** According to DIN 4102: B2

Product programme and Dimensions



	Frese no.	Valve Dimension	Valve Type	Insulation Cover Measures AxBxC [mm]
	38-0857	DN10-DN15-DN20	OPTIMA Compact/PV Compact	85 x 114 x 91
	38-0858	DN25	OPTIMA Compact /PV Compact	119 x 134 x 102
	38-0859	DN25L-DN32	OPTIMA Compact	131 x 165 x 115
	38-0860	DN25L-DN32	PV Compact	131 x 165 x 115
	38-0861	DN15-DN20	SIGMA Compact	85 x 114 x 91
	38-0862	DN25	SIGMA Compact	119 x 134 x 102
	38-0863	DN25L-DN32	SIGMA Compact	131 x 165 x 115

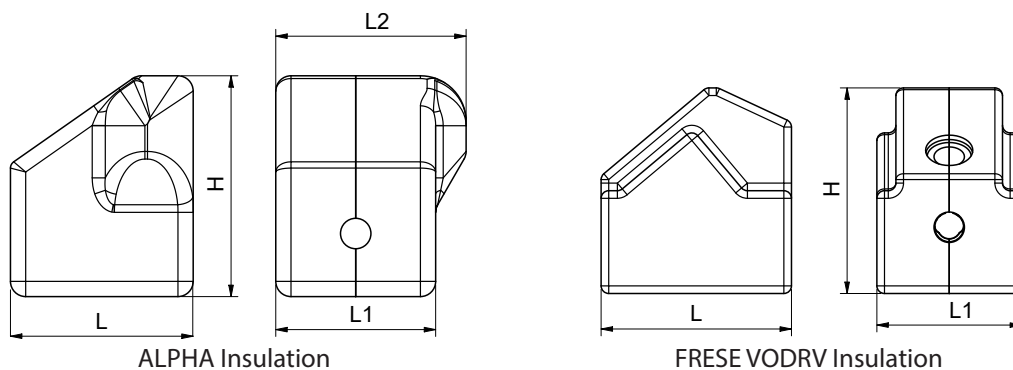
Insulation Covers

Frese Valves, DN10-DN50

Technical data · Insulation Covers for ALPHA, Frese VODRV and PV/OPTIMA/SIGMA Compact

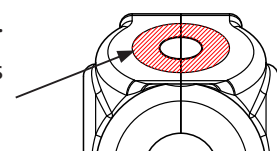
- Material:** EPE (Crosslinked Expanded Polyethylene)
- Water absorption:** < 1 vol % at 20 °C
- Temperature range:** Up to 90 °C
- Insulating property:** Lambda = 0.041 W/mk
- Density:** 30 g/l
- Fire resistant:** According to DIN 4102: B2

Product programme and dimensions



	Frese no.	Dim.	Valve Type	L [mm]	L1 [mm]	L2 [mm]	H [mm]
	38-0869	DN15	ALPHA	120	105	125	145
	38-0870	DN20		125	115	135	145
	38-0871	DN15	Frese VODRV	125	95	-	135
	38-0872	DN20		130	100	-	135
	38-0873	DN25		145	110	-	150
	38-0874	DN32		170	115	-	152
	38-0875	DN40		160	130	-	166
	38-0876	DN50		180	150	-	182
	38-0877	DN40/50	PV Compact	225	165	-	290
	38-0878*	DN40/50	OPTIMA/SIGMA Compact	225	160	-	280

*) This insulation cover is suitable for both SIGMA Compact and OPTIMA Compact DN40-DN50. When it is used on OPTIMA Compact, the top part (hatched area) of the insulation cover needs to be cut away. For this purpose the part is made thinner.



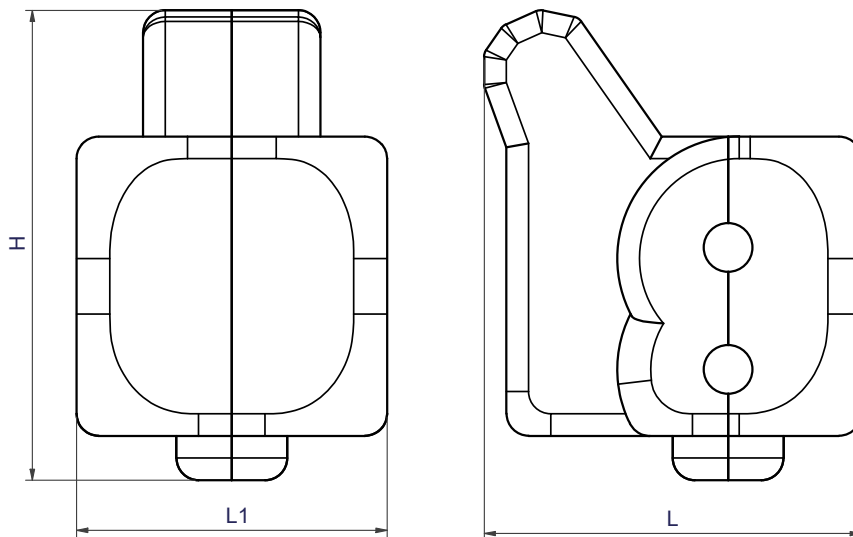
Insulation Covers

Frese Valves, DN10-DN50

Technical data · Insulation Covers for COMBIFLOW

Material:	EPE (Crosslinked Expanded Polyethylene)
Water absorption:	< 1 vol % at 20 °C
Temperature range:	Up to 90 °C
Insulating property:	Lambda = 0.041 W/mk
Density:	30 g/l
Fire resistant:	According to DIN 4102: B2

Product programme and dimensions



	Frese no.	Dim.	Valve Type	L [mm]	L1 [mm]	H [mm]
	38-0879	DN15	COMBIFLOW	170	140	212
	38-0880	DN20		195	155	233

Frese A/S assumes no responsibility for errors, if any, in catalogues, brochures, and other printed matter. Frese A/S reserves the right to modify its products without prior notice, including already ordered products, if this does not alter existing specifications. All registered trademarks in this material are the property of Frese A/S. All rights reserved.

Frese A/S
 Tel: +45 58 56 00 00
 info@frese.dk