

COMBIFLOW Multi Rotary Actuator

Modbus Integration Guide

Application

The COMBIFLOW Multi Rotary is a combined analogue and digital actuator designed to be used with the COMBIFLOW 6-way Pressure Independent Control Valve in 4-pipe applications.

The sizing flows can be programmed using BACnet or Modbus or by limiting the voltage or current signal to the actuator. The actuator can then be used for:

- Switching between cooling and heating.
- Flow modulation.
- Flow shut off.
- Error and status reporting.

When used as an analogue actuator, it communicates with the Building Management system (BMS) using a 0(2)-10 V or 0(4)-20 mA signal. When used as a digital actuator, it integrates with BACnet or Modbus systems, allowing simple configuration, feedback, flow and status indication.

This document describes how to integrate the actuators using Modbus RTU.

For actuator installation on the COMBIFLOW valve and electrical wiring, please refer to the COMBIFLOW Multi Rotary actuator Technote.

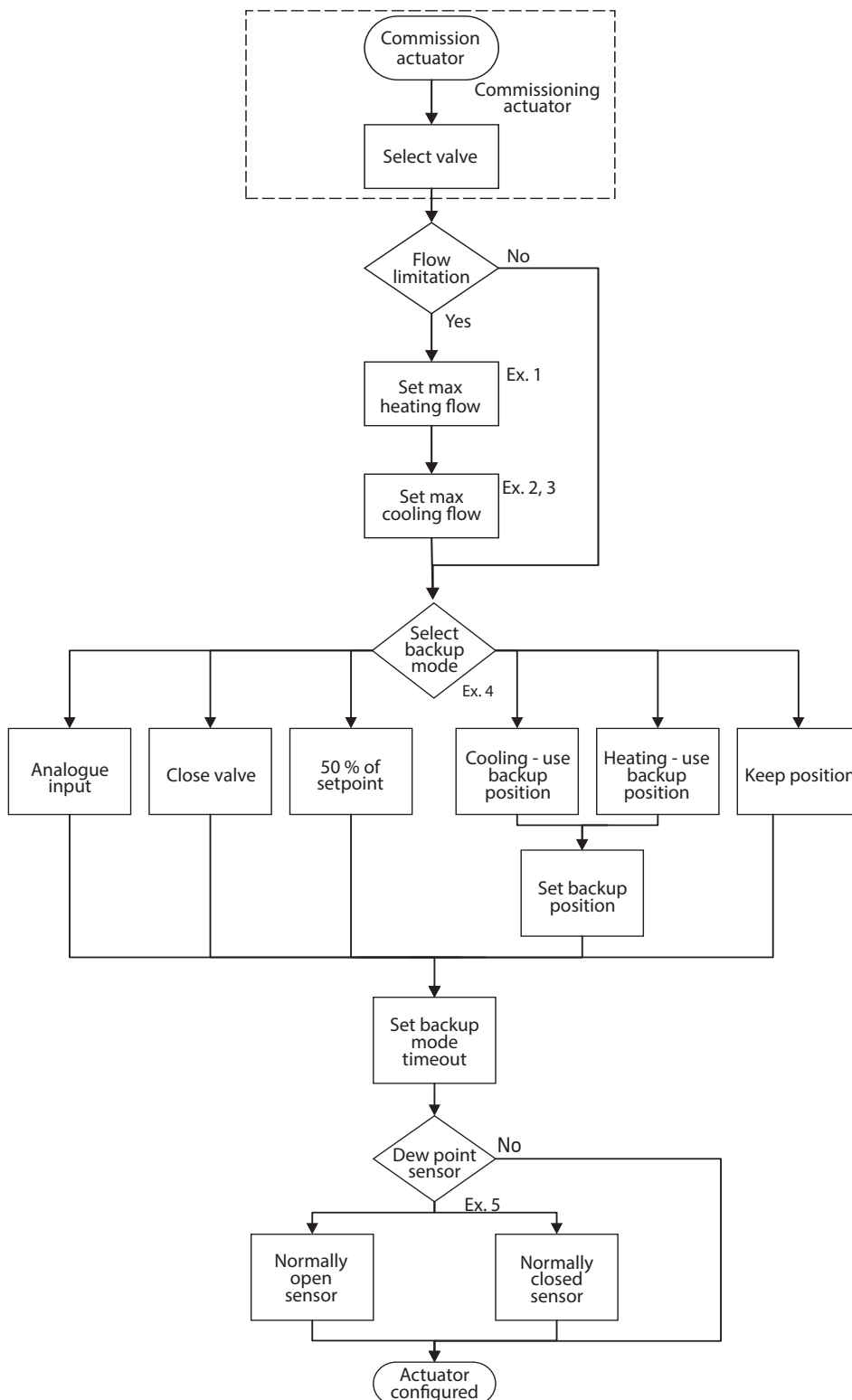


COMBIFLOW Multi Rotary Actuator

Modbus Integration Guide

Overview

The flowchart below describes the complete actuator commissioning process. The guide starts by explaining the basic communication settings and valve selection process. Then, an application example is provided for each step of the flowchart and lastly, a complete object list is provided. Beside each step there is a reference such as Ex. 2. This refers to an application example, so the example given is Application example 2 on page 5. A basic commissioning can be done very quickly by jumping over the optional steps.



COMBIFLOW Multi Rotary Actuator

Modbus Integration Guide

Commissioning actuator

This basic setup prepares the valve and actuator to control the flow using algorithms.

Given that the Modbus-address has already been setup using the DIP-switches shown in the COMBIFLOW Multi Rotary Technote, these registers are needed to setup the Modbus communication. In registers where “**W**” is shown in the R/W column, values must be written into the registers. By default, the Modbus communication is 19200 8-E-1 baud, 8 databits, Even parity, and 1 stopbit.

To configure the communication settings, these registers must be setup (using 19200 8-E-1):

Name	Reg. adr. (Hex.)	Reg. adr. (Dec.)	Type	R/W	Values	Unit
MAC address*	0x701	1793	Uint16	R/W	1..247	--
RS-485 baud rate	0x601	1537	Uint16	R/W	0: 19200	--
					1: 9600	
					2: 19200	
					3: 38400	
					4: 57600	
					5: 76800	
RS-485 data format	0x602	1538	Uint16	R/W	0: 8E1	--
					1: 8N1	
					2: 8N2	
					3: 8O1	
ValveSelect	0x603	1539	Uint16	R/W	3: DN15LF	--
Reset**	0x700	1792	Uint16	W	2: Softreset	--

*** This register contains the current address of the actuator set by the HEX-switches. Changing this register overrides the HEX-switches.**

** Power cycling the device can also enable the new baudrate / data format.

The valve used in this example is a COMBIFLOW DN15 LF. The complete range of COMBIFLOW valves are selectable (see Register 0x603/ValveSelect object in the object list).

When the commissioning has been done, the examples on the following pages can be performed.

COMBIFLOW Multi Rotary Actuator

Modbus Integration Guide

Application Example 1 · Flow setting and heating control

Example: Flow setting for cooling and heating, and control the valve in heating region.

Register 515: Preset value for the cooling side.

Register 519: Preset value for the heating side.

Register 514: Cooling flow setpoint 0-10000/0-100. 0-10000/0-100.

Register 518: Heating flow setpoint 0-10000/0-100. 0-10000/0-100.

Name	Reg. adr. (Hex.)	Reg. adr. (Dec.)	Type	R/W	Values	Unit
MaxCooling	0x203	515	Uint16	W	25 (Preset scale value 2.5)	--
MaxHeating	0x207	519	Uint16	W	10 (Preset scale value 1.0)	--
HeatingSet*	0x206	518	Uint16	W	0..10000	--

* Writing to HeatingSet, sets CoolingSet to 0, and vice versa.

Application Example 2 · Flow setting and cooling control

Example: Flow setting for cooling and heating, and control the valve in cooling region.

Register 515: Preset value for the cooling side.

Register 519: Preset value for the heating side.

Register 514: Cooling flow setpoint 0-10000/0-100. 0-10000/0-100.

Name	Reg. adr. (Hex.)	Reg. adr. (Dec.)	Type	R/W	Values	Unit
MaxCooling	0x203	515	Uint16	W	25 (Preset scale value 2.5)	--
MaxHeating	0x207	519	Uint16	W	10 (Preset scale value 1.0)	--
CoolingSet*	0x202	514	Uint16	W	0..10000	--

* NB! Writing to HeatingSet, sets CoolingSet to 0, and vice versa.

COMBIFLOW Multi Rotary Actuator

Modbus Integration Guide

Application Example 3 · Flow setting, cooling control and read of flow estimation

Example: Flow setting for cooling and heating, controlling the valve in cooling region and reading the estimated flow.

Register 515: Preset value for the cooling side.

Register 519: Preset value for the heating side.

Register 514: Flow setpoint 0-10000.

Register 513: Estimated flow in the cooling region.

Name	Reg. adr. (Hex.)	Reg. adr. (Dec.)	Type	R/W	Values	Unit
MaxCooling	0x203	515	Uint16	W	25 (Preset scale value 2.5)	--
MaxHeating	0x207	519	Uint16	W	10 (Preset scale value 1.0)	--
CoolingSet*	0x202	514	Uint16	W	5000 (0: No flow .. 10000: Max preset)	--
CoolingFlow	0x201	513	Uint16	R	Example: 70 = 70 l/h**	l/h

* Writing to CoolingSet, sets HeatingSet to 0

** Estimated actual flow in the valve. In this example valve DN15 LF is selected. The actual flow can deviate from the estimated flow due to mechanical tolerances in actuator and valve.

Application Example 4 · Backup function

Example: Setting up backup function in case of communication loss.

In this example the valve will go to cooling position 5000 (range 0-10000, approximately the middle of the cooling region) if the bus communication is down for more than 1 hour (3600 s).

Register 522: BackupPosition.

Register 523: BackupTimeout in seconds.

Register 1536: Cooling with position set in Register 522.

Name	Reg. adr. (Hex.)	Reg. adr. (Dec.)	Type	R/W	Values	Unit
BackupPosition	0x20A	522	Uint16	W	5000 (0: No flow .. 10000: Max preset)	--
BackupTimeout	0x20B	523	Uint16	W	3600 (3600 sec / 1 hour)	Seconds
BackupMode	0x600	1536	Uint16	W	3: Cooling with BackupPosition	--

Application Example 5 · Dew point sensor

Example: Setting up the dew-point sensor.

When the dew point sensor is active, the actuator will close the valve.

Normally Open (N0) = Dew point active when Ain (Y1) is > 2V

Normally Closed (N1) = Dew point active when Ain (Y1) is < 2V

Register 1540: Select functionality of the dew-point sensor. When the dew-point sensor is active, the actuator will close the valve.

Name	Reg. adr. (Hex.)	Reg. adr. (Dec.)	Type	R/W	Values	Unit
DewPointSelect	0x604	1540	Uint16	W	1: DewPoint N0*	--

* In the example above the relay is connected between terminal 2 and 3.. When the relay is active (short circuit between pin 2 and 3 via the relay) the valve will be closed and there will be no flow as long as the relay is active

COMBIFLOW Multi Rotary Actuator

Modbus Integration Guide

Application Example 6 · Analogue input

Example: Reading analog input.

Register 0: Read the analogue input voltage present on Y1 (when not used for dewpoint sensor).

Name	Reg. adr. (Hex.)	Reg. adr. (Dec.)	Type	R/W	Values	Unit
Ain (Y1)	0x0	0	Uint16	R	8300*	V*1000

* In the example above a 8,3 V signal is present at pin 3.

Application Example 7 · Status

Example: Reading the status bits.

Register 2048: Current status of the actuator.

Name	Reg. adr. (Hex.)	Reg. adr. (Dec.)	Type	R/W	Values	Unit
Status	0x800	2048	Uint16	R	00001000* = Dew-point sensor active*	--

* In the example above, the dew-point sensor is active, and the actuator has moved to the closed position.

COMBIFLOW Multi Rotary Actuator

Modbus Integration Guide

Register List

Name	Description	Reg. adr. (Hex.)	Reg. adr. (Dec.)	Type	R/W	Values	Unit
Ain	Analog Input (Y1) 0-10 V	0x0	0	Uint16	R	0 - 10000	V*1000
Aout	Analog Output (U) 0-10 V	0x100	256	Uint16	R	0 - 10000	V*1000
Cooling	Current cooling position	0x200	512	Uint16	R	0 - 10000	--
CoolingFlow	Current cooling flow estimation (l/h)	0x201	513	Uint16	R	0 - Max flow of selected valve	l/h
CoolingSet	Cooling setpoint	0x202	514	Uint16	R/W	0 - 10000	--
MaxCooling	Cooling preset 0-4.0	0x203	515	Uint16	R/W	0 - 40	--
Heating	Current heating position	0x204	516	Uint16	R	0 - 10000	--
HeatingFlow	Current heating flow estimation (l/h)	0x205	517	Uint16	R	0 - Max flow of selected valve	l/h
HeatingSet	Heating setpoint	0x206	518	Uint16	R/W	0 - 10000	--
MaxHeating	Heating preset 0-4.0	0x207	519	Uint16	R/W	0 - 40	--
BackupPosition	Backup position for either cooling or heating	0x20A	522	Uint16	R/W	0 - 10000	--
BackupTimeout	Backup timeout in seconds	0x20B	523	Uint16	R/W	1 - 65535	Seconds
Firmware ver.	Current firmware version	0x218	536	Uint16	R	Current FW version	FW*100
BackupMode	Analog input value	0x600	1536	Uint16	R/W	0	--
	Closed position					1	
	50 % of setpoint					2	
	Cooling with BackupPosition					3	
	Heating with BackupPosition					4	
	Keep position					5	

COMBIFLOW Multi Rotary Actuator

Modbus Integration Guide

Register List

Name	Description	Reg. adr. (Hex.)	Reg. adr. (Dec.)	Type	R/W	Values	Unit
BaudRate	19200	0x601	1537	Uint16	R/W	0	--
	9600					1	
	19200					2	
	38400					3	
	57600					4	
	76800					5	
	115200					6	
DataFormat	8E1	0x602	1538	Uint16	R/W	0	--
	8N1					1	
	8N2					2	
	8O1					3	
ValveSelect	Generic	0x603	1539	Uint16	R/W	0	--
	DN20					1	
	DN15					2	
	DN15LF					3	
DewPointSelect	No sensor	0x604	1540	Uint16	R/W	0	--
	Dew point sensor NO (N0) (Normally Open)					1	
	Dew point sensor NC (N1) (Normally Closed)					2	
Reset	No change	0x700	1792	Uint16	R/W	0	--
	Reset to default values					1	
	Softreset					2	

COMBIFLOW Multi Rotary Actuator

Modbus Integration Guide

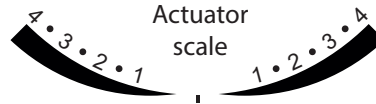
Register List

Name	Description	Reg. adr. (Hex.)	Reg. adr. (Dec.)	Type	R/W	Values	Unit
MAC address	RS-485 address of the actuator	0x701	1793	Uint16	R/W	1..247	--
Status	Obstruction (Jammed)	0x800	2048	Uint16	R	Bit 0	--
	Cooling					Bit 1	
	Heating					Bit 2	
	DewPoint sensor active					Bit 3	
	Reserved					Bit 4-7	

COMBIFLOW Multi Rotary Actuator

Modbus Integration Guide

Setting and Flow



DN15 Low - 925 l/h

	Flow cooling [l/h]	Flow heating [l/h]	Modbus setting
	830	0	40
	780	0	38
	730	0	36
	660	0	34
	560	0	32
	460	0	30
	380	0	28
	310	0	26
	240	0	24
	190	0	22
	140	0	20
	120	0	18
	100	0	16
	85	0	14
	75	0	12
	65	0	10
	50	0	8
	35	0	6
	30	0	5
Switch over zone			
	0	30	5
	0	35	6
	0	50	8
	0	65	10
	0	75	12
	0	85	14
	0	100	16
	0	120	18
	0	140	20
	0	190	22
	0	240	24
	0	310	26
	0	380	28
	0	460	30
	0	560	32
	0	660	34
	0	730	36
	0	780	38
	0	830	40

DN15 - 1200 l/h

	Flow cooling [l/h]	Flow heating [l/h]	Modbus setting
	1200	0	40
	1170	0	38
	1150	0	36
	1090	0	34
	1000	0	32
	910	0	30
	810	0	28
	700	0	26
	610	0	24
	550	0	22
	490	0	20
	430	0	18
	380	0	16
	320	0	14
	260	0	12
	210	0	10
Switch over zone			
	0	210	10
	0	260	12
	0	320	14
	0	380	16
	0	430	18
	0	490	20
	0	550	22
	0	610	24
	0	700	26
	0	810	28
	0	910	30
	0	1000	32
	0	1090	34
	0	1150	36
	0	1170	38
	0	1200	40

DN20 - 4250 l/h

	Flow cooling [l/h]	Flow heating [l/h]	Modbus setting
	4250	0	40
	3990	0	38
	3730	0	36
	3400	0	34
	3000	0	32
	2600	0	30
	2310	0	28
	2020	0	26
	1760	0	24
	1540	0	22
	1310	0	20
	1110	0	18
	910	0	16
	740	0	14
	600	0	12
	460	0	10
Switch over zone			
	0	460	10
	0	600	12
	0	740	14
	0	910	16
	0	1110	18
	0	1310	20
	0	1540	22
	0	1760	24
	0	2020	26
	0	2310	28
	0	2600	30
	0	3000	32
	0	3400	34
	0	3730	36
	0	3990	38
	0	4250	40

Frese A/S assumes no responsibility for errors, if any, in catalogues, brochures, and other printed matter. Frese A/S reserves the right to modify its products without prior notice, including already ordered products, if this does not alter existing specifications. All registered trademarks in this material are the property of Frese A/S. All rights reserved.